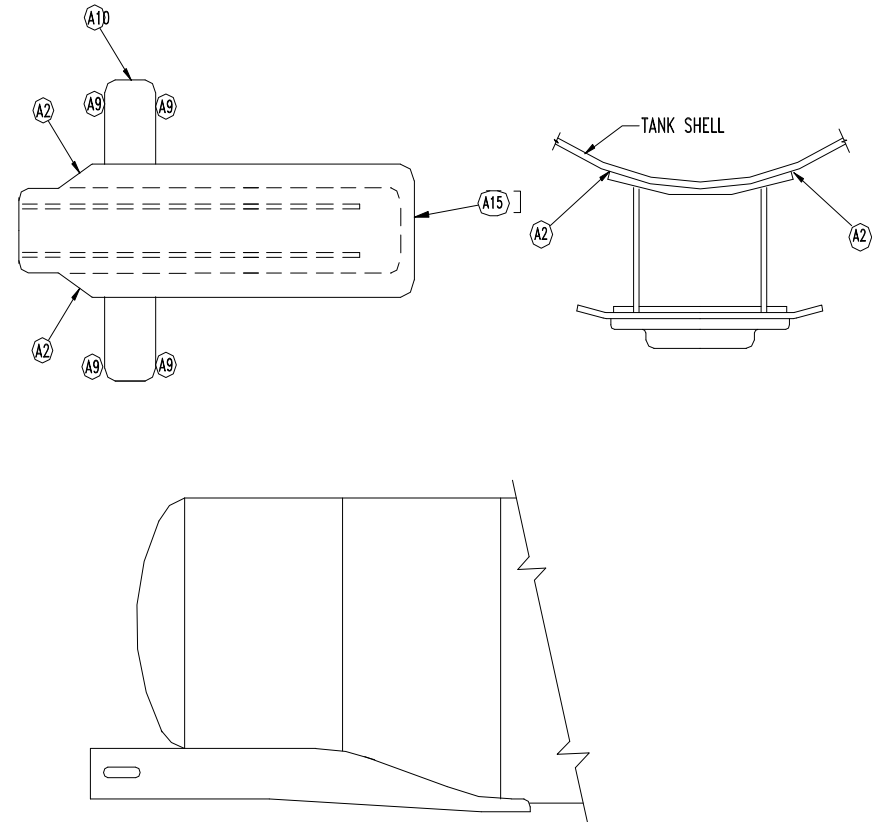


Location Designations			Sketch/Description:
Pad-to-Tank Welds (Designated with an 'A' code)			
Code	Description	Location	Inspect
A2	Outboard longitudinal pad-to-tank weld.	AR, AL, BR, BL	Full length of weld to termination @ bolster.
A9	Bolster pad-to-tank transverse weld.	ARO, ARI, ALO, ALI, BRO, BRI, BLO, BLI	Full length of weld at sides of bolster pad
A10	Top of bolster pad longitudinal weld.	AL, AR, BL, BR	Full length of weld at top of bolster cradle pad.
A15	Sill pad-to-tank inboard transverse welds.	AR, AL, BR, BL	Full length of weld including 6" of portions that wrap around longitudinally.

Use the "Generic Body Bolster." template for body bolster defects.
 Use the TCID "Record Shell/Sill Damage" button for:

- All parent metal defects.
- All structural defects outside the scope of these templates.



Location Designations:				Sketch/Description:
Sill-to-Pad Welds (Designated with an 'B' code)				
Code	Description	Location	Inspect	
B2	Outboard termination of longitudinal weld (outside of sill).	AR, AL, BR, BL.	Last 6" of weld to termination.	
B4	Inboard termination of longitudinal weld (outside of sill).	AR, AL, BR, BL.	Last 6" of weld including any portion of weld that wraps around sill and connects with B44.	
B22	Rear lug reinforcement to cradle pad weld. For general cars, this weld will be from rear lug reinforcement to sill top flange.	AR, AL, BR, BL	Outboard termination plus six (6) inches.	
B104	Inboard termination of sill web-to-sill bottom cover.	AR, AL, BR, BL.	Last 6" of weld.	
B105	Sill bottom flange to cradle pad transverse weld.	A- & B-Ends	Full length of weld.	
B106	Inboard termination of sill bottom cover-top-cradle pad longitudinal weld.	AR, AL, BR, BL.	Last 6" of weld.	
<p>Use the "Generic Body Bolster." template for body bolster defects.</p> <p>Use the TCID "Record Shell/Sill Damage" button for:</p> <ul style="list-style-type: none"> • All parent metal defects. • All structural defects outside the scope of these templates. 				