

Location Designations:

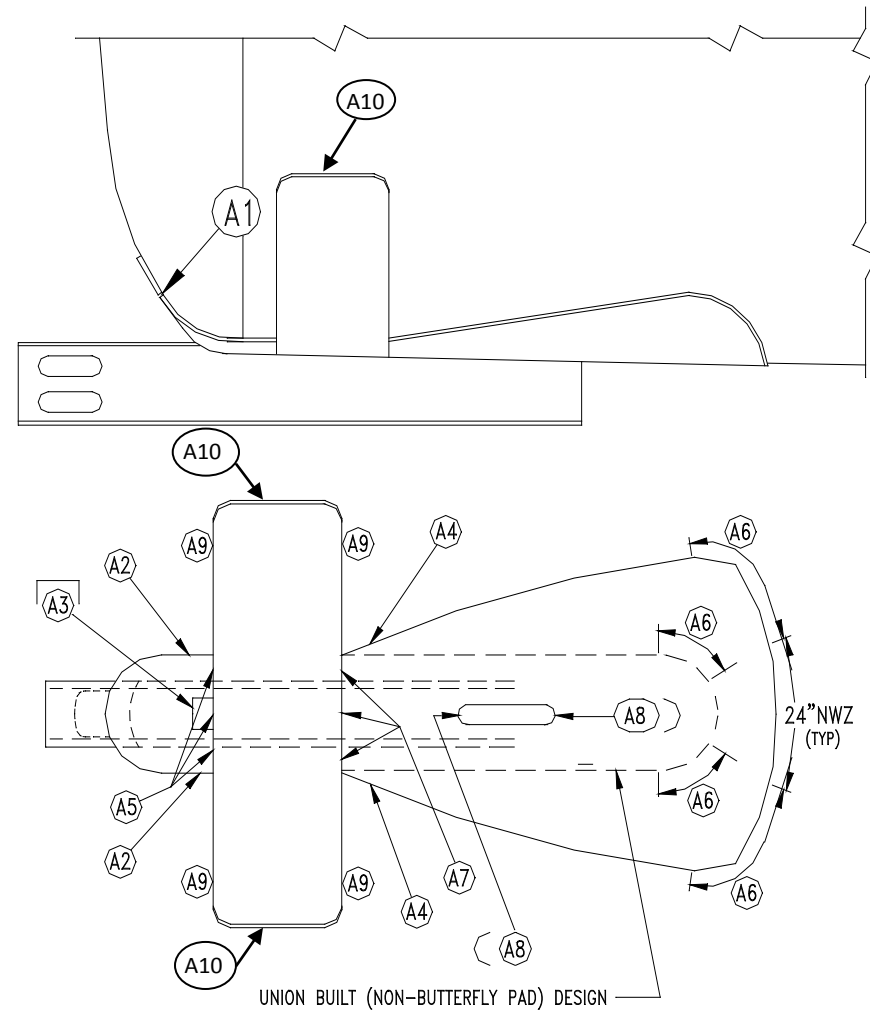
Pad-to-Tank Welds (Designated with an 'A' code)

Code	Description	Location	Includes
A1	Outboard sill pad-to-tank transverse weld.	A- & B-Ends	Full length including weld around corner of pad.
A2	Front sill pad longitudinal welds.	AR, AL, BR, BL	Full length of weld to termination at the body bolster.
A3	Fillet weld in front sill pad-to-tank cutout	A- & B-Ends.	Complete weld.
A4	Sill pad longitudinal weld	AR, AL, BR, BL	6" of weld from termination.
A5	Outboard sill pad-to-bolster pad transverse weld.	A- & B-Ends	Complete weld.
A6	Inboard termination of sill pad longitudinal welds.	AR, AL, BR, BL	Inspect 24" of weld including wrap around to weld termination at 24" NWZ. On UTC-built cars inspect last 6" of weld termination.
A7	Sill pad-to-bolster pad transverse weld.	A- & B-Ends	Complete weld.
A8	Sill pad-to-tank slot welds.	A- & B-Ends	Last 6" of weld at each end of slot.
A9	Bolster pad-to-tank transverse weld.	ARO, ARI, ALO, ALI, BRO, BRI, BLO, BLI	36" from junction with cradle pad.
A10	Body bolster cradle pad horn-longitudinal weld	AR, AL, BR, BL	Full length of weld.

Use the "Generic Tank Head Brace." template for head brace defects.  
 Use the "Generic Body Bolster." template for body bolster defects.  
 Use the TCID "Record Shell/Sill Damage" button for:

- All parent metal defects.
- All structural defects outside the scope of these templates.

Sketch/Description:



Location Designations:

Sketch/Description:

Sill-to-Pad Welds (Designated with an 'B' code)

Code	Description	Location	Includes
B1	Transverse welds (top of sill flange).	A- & B-Ends.	Full length of weld, inspect form top of sill.
B2	Outboard termination of longitudinal weld (outside of sill).	AR, AL, BR, BL.	Last 6" of weld to termination.
B3	Transverse welds (bottom of top sill flange).	A- & B-Ends.	Full length of weld from inside.
B4	Inboard termination of longitudinal weld (outside of sill).	AR, AL, BR, BL.	Last 6" of weld including any portion of weld that wraps around sill and connects with B44.
B22	Outboard termination of longitudinal weld (inside of sill).	AR, AL, BR, BL.	Last 6" of weld.
B44	Inboard termination of longitudinal weld (inside of sill).	AR, AL, BR, BL.	Last 6" of weld.

Use the "Generic Tank Head Brace." template for head brace defects.  
 Use the "Generic Body Bolster." template for body bolster defects.  
 Use the TCID "Record Shell/Sill Damage" button for:

- All parent metal defects.
- All structural defects outside the scope of these templates.

