

Location Designations:

Sketch/Description:

1. Pad-to-Tank Welds (Designated with an 'A' code)

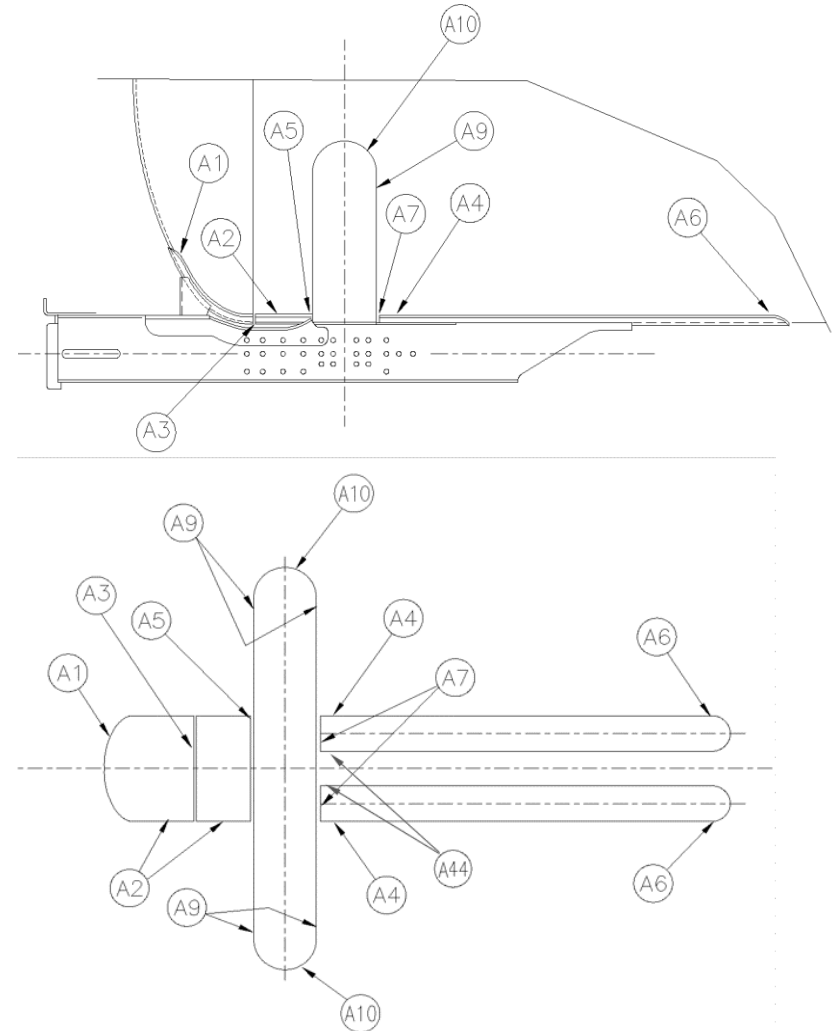
Code	Description	Location	Includes
A1	Outboard sill pad-to-tank transverse weld.	A- & B-Ends	Full length including weld around corner of pad.
A2	Front sill pad longitudinal welds.	AR, AL, BR, BL	Full length of weld to termination at the bolster pad.
A3	Fillet weld in front sill pad-to tank cutout	A- & B-Ends.	Complete weld.
A4	Sill pad longitudinal weld.	AR, AL, BR, BL	Termination of weld
A5	Second full-transverse sill pad weld	A- & B-Ends	Complete weld.
A6	Inboard termination of sill pad longitudinal welds.	AR, AL, BR, BL	Termination of weld
A7	Inboard sill pad to bolster pad transverse weld	A- & B-Ends	Complete weld.
A9	Bolster pad-to-tank transverse weld.	ARO, ARI, ALO, ALI, BRO, BRI, BLO, BLI	36" from junction with cradle pad.
A10	Top of bolster pad longitudinal weld.	AR, AL, BR, BL	Complete weld.
A44	Sill pad longitudinal weld.	AR, AL, BR, BL	Termination of weld

Use the "Generic Tank Head Brace" template for head brace defects.

Use the "Generic Body Bolster" template for body bolster defects.

Use the TCID "Record Shell/Sill Damage" button for:

- All parent metal defects.
- All structural defects outside the scope of these templates.



2. Sill-to-Pad Welds (Designated with an 'B' code)

Code	Description	Location	Includes
B1	Outboard transverse weld (top of sill flange).	A- & B-Ends.	Full length of weld, inspect form top of sill.
B2	Outboard termination of longitudinal weld (outside of sill).	AR, AL, BR, BL.	Termination of weld
B3	Outboard bottom of top sill flange transverse weld.	A- & B-Ends.	Full length of weld from inside.
B4	Inboard termination of longitudinal weld (outside of sill).	AR, AL, BR, BL.	Termination of weld including any portion of weld that wraps around sill and connects with B44.
B22	Outboard termination of longitudinal weld (inside of sill).	AR, AL, BR, BL.	Termination of weld
B44	Inboard termination of longitudinal weld (inside of sill).	AR, AL, BR, BL.	Termination of weld

Use the "Generic Tank Head Brace" template for head brace defects.

Use the "Generic Body Bolster" template for body bolster defects.

Use the TCID "Record Shell/Sill Damage" button for:

- All parent metal defects.
- All structural defects outside the scope of these templates.

